



SPORT
UTILITY
VEHICLES

mahindra^{Rise}



XUV 3XO

Everything You Want
& More



Life is full of possibilities. The new XUV 3XO is engineered to help you seize them all. Whether you're conquering your daily hustle, planning a weekend escape, or embarking on epic road trips, the XUV 3XO is your capable companion & More. We've packed it with the features you need to make the drive of your life effortless, safe, and enjoyable without any compromise.

It's an incredible bonanza of everything you want & More. It's the XUV 3XO.

Outspace the ordinary.
Rise above the rest.



Infinity LED Tail Lamp

The XUV 3X0 is designed to turn heads with its athletic stance, commanding respect and exuding the confidence of a true SUV. This isn't just about its presence, it's about uncompromised stability & More. Feel the difference on every turn. The ample ground clearance and a planted stance of the XUV 3X0 paves the way for endless explorations, be it in the urban or in the wild setting.

- **Ground Clearance - 201 mm***
- **Command Seating Position**
- **LED headlamps and LED DRLs with Integrated Turn Indicators**



Front Grille with Piano Black Finish

R17 Diamond Cut Alloy Wheels

BEST IN SEGMENT

*This varies as per variant
Disclaimer: Creative visualisation. For illustrative purpose only.

FIRST IN
SEGMENT Skyroof™



Rear AC Vents (Standard from base)

FIRST IN
SEGMENT Dual Zone Climate Control

FIRST IN
SEGMENT Soft Touch Leatherette on
Dashboard and Door Trims

Elevate your comfort.
Surpass the mundane.

The XUV 3X0 elevates every journey. Step inside and discover a sanctuary of sophistication and comfort, meticulously designed for those who appreciate the finer things. The luxurious interiors boast of a slew of premium features like Skyroof™, Soft Touch Leatherette on the dashboard and door trims, Premium Leatherette seats & More.

- Premium Leatherette Seats
- Cooled Glovebox with Illumination
- Passive Keyless Entry
- Front Armrest with Storage & Console with Cup Holder

Expansive space.
Captivating sophistication.

harman/kardon

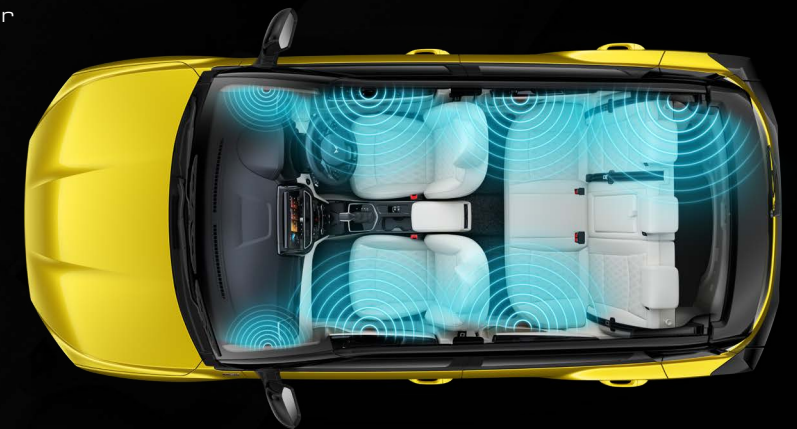
Its expansive interior offers ample legroom, headroom, and cargo space, ensuring the right space where it counts. Experience the freedom of movement without compromising on style. The XUV 3XO's thoughtfully designed cabin incorporates features like the 7 Speaker audio system by Harman Kardon for an immersive experience. Here, style and spaciousness come together with an abundance of everything you ever desired & More.

**BEST IN
SEGMENT** Space:

- **Widest-in-segment: 1821 mm**
- **Longest-in-segment Wheelbase: 2600 mm**
- **Rear Split Seats (Standard from base)**
- **Boot Space of 364 L****

Harman Kardon Premium Audio System with:

- 4 Ambience Sound Modes
- Sonic Expanse
- Bass Enhancer Technology
- 9-Band Equaliser



**Boot space as per ISO V215

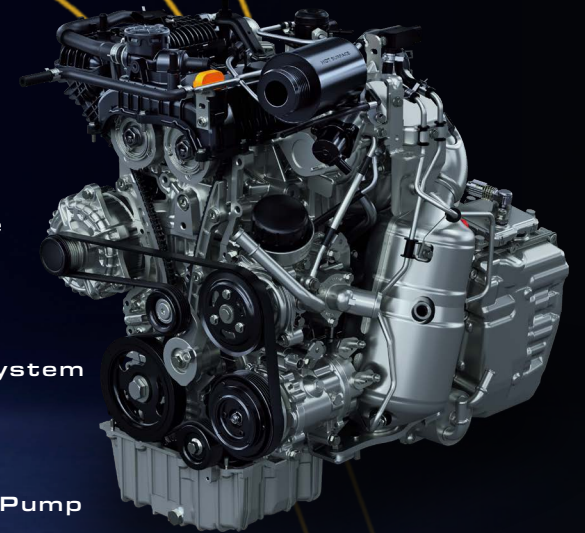
Disclaimer: Creative visualisation. For illustrative purpose only.

Perfected performance. Engineered efficiency.



Lead ahead with the most exciting and peppy engine offering segment leading power of 96 kW @ 5000 r/min and 230 Nm of torque @ 1500-3750 r/min (35% higher than top competitors). Salient features of the TGD_i Engine which offer high performance without compromising on the fuel efficiency:

- 250 Bar High Pressure Fuel Injection System
- Forced Air Intercooler System
- Intelligent Energy Management
- Variable Valve Timing
- Electronically Controlled Variable Oil Pump
- Integrated Exhaust Manifold



TGD_i

Beyond gears. Embrace the thrill of automatic driving.

The XUV 3XO is powered by a lineup of world-class Turbo engines designed for exhilarating performance and superior efficiency. Leave hesitation behind with effortless acceleration and conquer any passing lane with confidence. Experience the drive of your life, redefined. To pump up some adrenaline we have 3 drive modes - Zip, Zap and Zoom and Smart Steering Modes. Enjoy more miles between fill-ups and less time at the pump. It lets you break free from compromise & More.

New 6 Speed Torque Converter Automatic Transmission

- **Optimised Gear shift Quality & Low Fuel Consumption**
- **Durability and Reliability with Compact and Simplified Design**
- **ADAS Compliant Design for Adaptive Cruise Control, Autonomous Emergency Braking & Dynamic Braking System**



Uncage the thrill. Embrace the safety.

The XUV 3XO sets a high benchmark with 35 standard safety features, ensuring a safe cocoon for you and your loved ones. While the responsive handling and powerful engine transform every drive into an exhilarating experience, features like Level 2 Advanced Driver Assistance Systems (ADAS) offer a comprehensive package promising paramount safety.

- 360 Degree Surround View System
- Electronic Stability Control (ESC)
- Front and Rear Parking Sensors
- Tyre Pressure Monitoring System
- All 4 Disk Brakes (Standard from Base)



Blind Spot Monitor

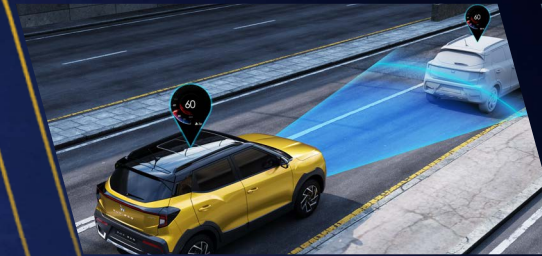
Bezel-Less Auto Dimming IRVM

FIRST IN SEGMENT Electronic Power Brake & Autohold

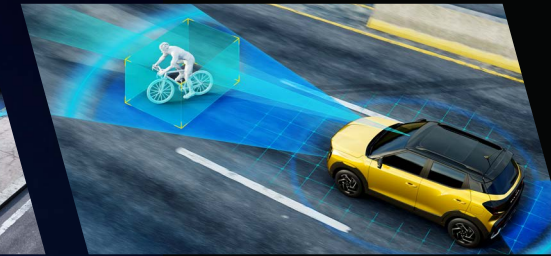


Drive with confidence, Not just instinct.

The first-in-segment Level 2 Advanced Driver Assistance Systems make the XUV 3XO an impenetrable fortress. With a radar and a camera that detects obstacles, avoids collisions, and assists the driver, there's no place as safe and exciting on the road as this.



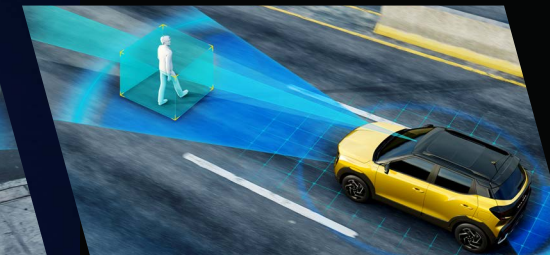
Adaptive Cruise Control



Auto Emergency Braking (Cyclist)



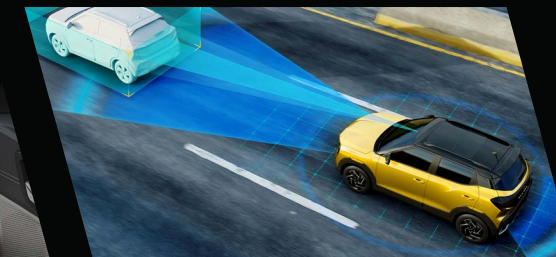
Forward Collision Warning



Auto Emergency Braking (Pedestrian)



Traffic Sign Recognition



Auto Emergency Braking (Vehicles)

- High Beam Assist
- Lane Departure Warning
- Lane Keep Assist
- Smart Pilot Assist



The XUV 3X0 isn't built for compromises. It's the ultimate blend of cutting-edge technology and uncompromising strength. The SUV for those who demand the best of both worlds. From a high-definition touchscreen to voice-activated control, it puts the future of automotive technology at your fingertips. Beneath the surface lies a rock-solid foundation crafted with high-strength materials and meticulous engineering, ensuring exceptional durability for everyday adventures.

Tech-Driven brilliance.
Engineered to impress.



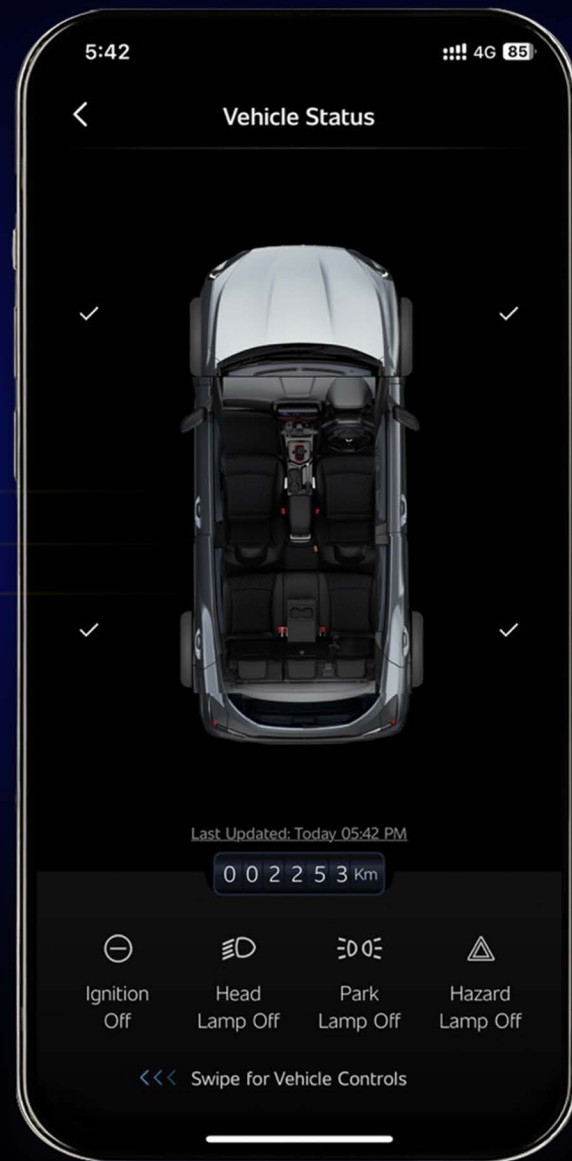
Navigation on Cluster

Wireless Charger & 65 W USB - C Fast Charging

- Twin HD (26.03 cm) Infotainment & (26.03 cm) Full Digital Cluster
- Built-in Amazon Alexa*
- Wireless Android Auto™ & Apple CarPlay™

Disclaimer: Creative visualisation. For illustrative purpose only.
*Certificate Expected

Intelligent technology at your fingertips



ADRENOX
CONNECT

Intelligent technology is at your fingertips with Adrenox Connect. Track your vehicle in real-time, lock and unlock it remotely, and even turn on the AC of your XUV 3XO. Now, control 80+ impressive Connected Features all with just a few taps on your phone screen. How's that for excitement

- Overspeed Alert • Tyre Pressure Alert
 - High Engine Temperature Alert
 - Engine Idle Alert • Low Fuel Alert
 - Seatbelt Alert • Insurance Expiry
- Lamp Status Alert • Vehicle Start/Stop Alert
 - Door Open Alert • Geo-Fence Alert
- Route Deviation Alert • Time Fence Alert
 - Unauthorised Vehicle Entry Alert
- PUC Expiry • Personalised Safety Alert
- PKE/RKE Low Battery Alert • Urea Level Low alert
 - DPF Choke Alert

- E-Call • SOS Button
- Roadside Assistance

- Live Tracking • Save Route / Save Places
 - Find my SUV • Share SUV Location
 - Push to SUV • Restroom Suggestion
- Ecosense • Trip History • Gamification
- Trip Replay • Pit Stops • Trip Tagging

- In Car Voice Assistant • In-home Alexa*
- Voice Custom Skill • Smart Wearables



XUV 3XO Service Promise

XUV 3XO scores big when it comes to your peace of mind. Offering you a 3-year standard warranty and 3 years of free roadside assistance in the event of small annoyances like running out of fuel or losing a key. Making any drive in your XUV 3XO, not just a thrilling experience, but also a reassuring one.

3 YEARS
UNLIMITED km
WARRANTY



**ADD-ON EXTENDED
WARRANTY AVAILABLE**



**3 YEARS OF
FREE ROADSIDE ASSISTANCE**



24x7 FREE TOWING



FREE FUEL ASSISTANCE*



FLAT TYRE ASSISTANCE



**FREE TAXI IN CASE OF
BREAKDOWN***



**KEY ASSISTANCE IN CASE OF
KEY LOSS OR BREAKAGE**

mahindra
**24X7 ON ROAD
ASSISTANCE**

TOLL FREE 1800 571 0848



***Terms & Conditions Apply**

MX1

Bi-Halogen Projector Headlamps
 LED Signature lamp with front turn Indicator
 LED Indicator on ORVM
 LED Tail Lamp
 6 Airbags
 Electronic Stability Control (ESC)
 ISOFIX
 R16 Steel Wheels
 Electrically Adjustable ORVM
 Engine Start/Stop
 Smart Steering Modes
 Power Window - Front & Rear
 Power Window : 1- Touch Down (Driver)
 Front Armrest with Storage
 60:40 Split Rear Seat
 Rear AC Vents
 Front & Rear USB - C
 12V Socket
 Adjustable Headrest for 2nd Row
 Electronic Trumpet Horn
 Reverse Parking Sensors
 Seat Belt Reminder for all Passengers
 Front Height Adjustable Seat Belt
 3 - Points Seat Belt for all Passengers

MX2

ADDS TO THE FEATURES OFFERED ON MX1

26.03 cm Infotainment
 4 Speakers
 Steering Audio Control
 Remote Keyless Entry
 Follow Me Home Headlamp
 Front USB - A & Rear USB - C

MX2 PRO

ADDS TO THE FEATURES OFFERED ON MX2

Single Pane Sunroof
 Wheel Cover

MX3

ADDS TO THE FEATURES OFFERED ON MX2

Single Pane Sunroof
 26.03 cm HD Infotainment
 Wireless Android Auto™ & Wired Apple CarPlay™
 Cruise Control
 Wireless Charger
 Wheel Cover

MX3 PRO

ADDS TO THE FEATURES OFFERED ON MX3

Bi-LED Projector Headlamps
 LED DRL with Front Turn Indicator
 Infinity LED Tail Lamp
 Stylized Vector Wheel

AX5

ADDS TO THE FEATURES OFFERED ON MX3 PRO

Twin HD 26.03 cm Infotainment & 26.03 cm Digital Cluster Screen
 Adrenox Connect with Built-in Alexa*
 Online Navigation
 Wireless Android Auto & Apple CarPlay™
 R16 Diamond Cut Alloys
 Dual Zone Climate Control
 Rear View Camera
 Passive Keyless Entry
 Push Button Start
 Leather Steering & Gear Knob
 Tyre Pressure Monitoring System
 Electrically Foldable ORVM
 Height Adjustable Driver Seat
 Rear Armrest with Cup Holder
 Auto Headlamps + Auto Wiper
 Rear Wiper & Wash
 Roof Rails & Rear Spoiler
 Rear Defogger
 6 Speakers
 Adjustable Headrest for 2nd Row Middle Passenger
 Power Window : - 1 Touch Up (Driver)

AX5 LUXURY

ADDS TO THE FEATURES OFFERED ON AX5

Level 2 ADAS
 360-degree Surround View System with Blind View Monitor
 Auto Dimming IRVM
 Electronic Parking Brake with Auto Hold
 Cooled Glove box

AX7

ADDS TO THE FEATURES OFFERED ON AX5

Skyroof™
 Harman Kardon Premium Audio with Amplifier & Sub-woofer
 Soft Touch Leatherette on Dashboard & Door Trims
 Leatherette Seats
 R17 Diamond Cut Alloys
 Auto Dimming IRVM
 LED Front Fog Lamps
 Front Parking Assist System
 Cooled Glove Box with Illumination
 65 W USB - C Fast Charging

AX7 LUXURY

ADDS TO THE FEATURES OFFERED ON AX7

Level 2 ADAS
 360-Degree Surround View System with Blind View Monitor
 Electronic Parking Brake with Auto Hold

TECHNICAL SPECIFICATIONS

ENGINE & TRANSMISSION

| | PETROL | | DIESEL |
|-------------------|---|---|--------------------------|
| Engine Type | mStallion Turbo Charged Multipoint Fuel Injection (TCMPFi) engine | mStallion Turbo Charged Intercooled Gasoline Direct injection (TGDi) engine | Turbo Diesel with CRDe |
| Capacity | 1.2 L | 1.2 L | 1.5 L |
| Max. Power | 82 kW @ 5000 r/min | 96 kW @ 5000 r/min | 85.8 kW @ 3750 r/min |
| Max. Torque | 200 Nm @ 1500-3500 r/min | 230 Nm @ 1500-3750 r/min | 300 Nm @ 1500-2500 r/min |
| Transmission Type | 6 MT / 6 AT | | 6 MT / 6 AutoSHIFT+ |

BRAKES

Front Brakes Disc/Rear Brakes Disc

SUSPENSION, TYRES & TURNING RADIUS

Front Suspension : McPherson Strut with Anti-roll Bar

Rear Suspension : Twist Beam Suspension with Coil Spring

Turning Radius (m) : 5.3

Tyre : 205/65 R16 Steel | 205/65 R16 Alloy | 215/55 R17 Alloy | Spare Tyre 135/90 R16

DIMENSIONS

| | |
|------------------------------|--------------------|
| Length x Width x Height (mm) | 3990 x 1821 x 1647 |
| Wheelbase (mm) | 2600 |
| Fuel Tank (L) | 42 |
| Boot space (L) | 364** |

| VARIANT | DIESEL | | PETROL | | | |
|-------------------|--------|------------|--------|------|--------|------|
| | MT | AutoSHIFT+ | MT | | AT | |
| | CRDe | | TCMPFi | TGDi | TCMPFi | TGDi |
| MX1 | | | • | | | |
| MX2 | • | | | | | |
| MX2 Pro | • | | • | | • | |
| MX3 | • | • | • | | • | |
| MX3 Pro | • | | • | | • | |
| AX5 | • | • | • | | • | |
| AX5 Luxury | | | | • | | • |
| AX7 | • | • | | • | | • |
| AX7 Luxury | • | | | • | | • |

The XUV 3XO Palette: Express Yourself in Every Hue.

Single Tone Colour Options



CITRINE YELLOW



DEEP FOREST



DUNE BEIGE



EVEREST WHITE



GALAXY GREY



NEBULA BLUE



STEALTH BLACK



TANGO RED

Dual Tone Colour Options



CITRINE YELLOW*



DEEP FOREST#



DUNE BEIGE*



EVEREST WHITE*



GALAXY GREY*



NEBULA BLUE#



STEALTH BLACK#



TANGO RED*


* Roof colour in Stealth Black


Roof colour in Galvano Grey


XUV 3XO

Disclaimers: All features mentioned in this booklet are not available on all the variants of Mahindra XUV 3XO ("Vehicle"). Accessories shown on the Vehicle are not part of the standard configuration and needs to be purchased separately. Performance figures shown are based on internal tests done by the experts in controlled environment. Actual performance figures may vary due to various factors such as driving conditions, maintenance, etc. and may differ in conditions. The images of the Vehicle shown are creative visualization and for illustrative purpose only. Tinted glass on the Vehicle is due to lighting effect. The colour of the Vehicle depicted in the image may differ from its actual appearance. Kindly visit your nearest Mahindra dealership to check the actual appearance of the Vehicle. Sunroof of the Vehicle is the largest sunroof in terms of dimensions in UVC segment and this feature is available only in select variants of the Vehicle. AdrenoX Application is available in select variants of the Vehicle. Harman Kardon audio system is available in select variants of the Vehicle. Harman Kardon and all related marks are registered trademarks of Harman and or its affiliates. Alexa feature is introduced to assist the Driver and improve the safety and convenience of driving a Vehicle. Alexa is only available in certain languages and regions. Alexa functionality may vary by location and variant of the Vehicle. Amazon, Alexa, and all related logos are trademarks of Amazon.com, Inc. or its affiliates. In view of our policy of continuously improving our products, we reserve the right to alter specifications or designs without prior notice and without liability to you. We reserve the right to add or delete any feature without prior notice and without any liability. Drive Modes are available only in Petrol Automatic variants. 'Android Auto' is a trademark of Google LLC and its affiliates. To use Android Auto on the Vehicle display, you will need an Android phone running Android 6.0 version or higher, an active data plan, and the Android Auto app. Apple Carplay is compatible only with select mobile devices with iOS operating system. The software and security mechanisms in the Vehicle are subject to ongoing developments. Like with computers or the operating systems of mobile devices, the software and security mechanisms in the Vehicle may also be updated at irregular intervals. MicroHybrid is available in all the variants. Smart Pilot Assist and Adaptive Cruise Control is only available on Luxury pack (L) Petrol Automatic variants of the Vehicle. Advanced Driver Assistance System (ADAS) are meant to assist the driver to keep the passengers and pedestrians safe on the roads. ADAS is not a substitute for human eye and driver's vigilance. The driver shall remain fully responsible for safety, vigilant and attentive driving. Only the Luxury pack variants (L) come with Electronic Park Brake. AX7 and above variants come only with dual tone colour options. The spare tyre does not come with an alloy.

auto.mahindra.com/suv/xuv3XO/

 [Mahindra XUV3XO](#)

 [@mahindraxuv3XO](#)

 [@mahindraxuv3XO](#)

 [@MahindraXUV3XO](#)

 **3 YEARS**
UNLIMITED km
WARRANTY