



SPORT  
UTILITY  
VEHICLES

mahindra<sup>Rise</sup>



XUV 3X0

Everything You Want  
& More



Life is full of possibilities. The new XUV 3XO is engineered to help you seize them all. Whether you're conquering your daily hustle, planning a weekend escape, or embarking on epic road trips, the XUV 3XO is your capable companion & More. We've packed it with the features you need to make the drive of your life effortless, safe, and enjoyable without any compromise.

It's an incredible bonanza of everything you want & More. It's the XUV 3XO.

Outspace the ordinary.  
Rise above the rest.



Infinity LED Tail Lamp

The XUV 3XO is designed to turn heads with its athletic stance, commanding respect and exuding the confidence of a true SUV. This isn't just about its presence, it's about uncompromised stability & More. Feel the difference on every turn. The ample ground clearance and a planted stance of the XUV 3XO paves the way for endless explorations, be it in the urban or in the wild setting.

- **Ground Clearance - 201 mm\***
- **Command Seating Position**
- **LED headlamps and LED DRLs with Integrated Turn Indicators**



Front Grille with  
Piano Black Finish

R17 Diamond Cut  
Alloy Wheels

**BEST IN  
SEGMENT**

\*This varies as per variant  
Disclaimer: Creative visualisation. For illustrative purpose only.

FIRST IN  
SEGMENT Skyroof™



Rear AC Vents (Standard from base)

FIRST IN  
SEGMENT Dual Zone Climate Control

FIRST IN  
SEGMENT Soft Touch Leatherette on  
Dashboard and Door Trims

Elevate your comfort.  
Surpass the mundane.

The XUV 3X0 elevates every journey. Step inside and discover a sanctuary of sophistication and comfort, meticulously designed for those who appreciate the finer things. The luxurious interiors boast of a slew of premium features like Skyroof™, Soft Touch Leatherette on the dashboard and door trims, Premium Leatherette seats & More.

- Premium Leatherette Seats
- Cooled Glovebox with Illumination
- Passive Keyless Entry
- Front Armrest with Storage & Console with Cup Holder

Expansive space.  
Captivating sophistication.

harman/kardon

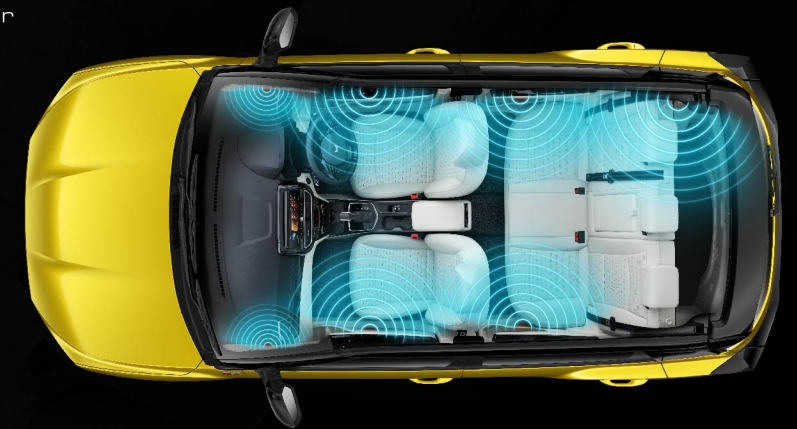
Its expansive interior offers ample legroom, headroom, and cargo space, ensuring the right space where it counts. Experience the freedom of movement without compromising on style. The XUV 3XO's thoughtfully designed cabin incorporates features like the 7 Speaker audio system by Harman Kardon for an immersive experience. Here, style and spaciousness come together with an abundance of everything you ever desired & More.

**BEST IN  
SEGMENT** Space:

- **Widest-in-segment: 1821 mm**
- **Longest-in-segment Wheelbase: 2600 mm**
- **Rear Split Seats (Standard from base)**
- **Boot Space of 364 L\*\***

**Harman Kardon Premium Audio System with:**

- 4 Ambience Sound Modes
- Sonic Expanse
- Bass Enhancer Technology
- 9-Band Equaliser



\*\*Boot space as per ISO V215

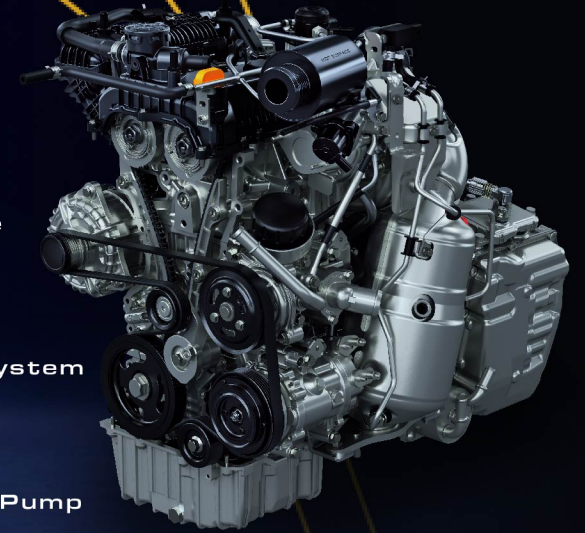
Disclaimer: Creative visualisation. For illustrative purpose only.

## Perfected performance. Engineered efficiency.



Lead ahead with the most exciting and peppy engine offering segment leading power of 96 kW @ 5000 r/min and 230 Nm of torque @ 1500-3750 r/min (35% higher than top competitors). Salient features of the TGD<sub>i</sub> Engine which offer high performance without compromising on the fuel efficiency:

- 250 Bar High Pressure Fuel Injection System
- Forced Air Intercooler System
- Intelligent Energy Management
- Variable Valve Timing
- Electronically Controlled Variable Oil Pump
- Integrated Exhaust Manifold



**TGD<sub>i</sub>**

# Beyond gears. Embrace the thrill of automatic driving.

The XUV 3XO is powered by a lineup of world-class Turbo engines designed for exhilarating performance and superior efficiency. Leave hesitation behind with effortless acceleration and conquer any passing lane with confidence. Experience the drive of your life, redefined. To pump up some adrenaline we have 3 drive modes - Zip, Zap and Zoom and Smart Steering Modes. Enjoy more miles between fill-ups and less time at the pump. It lets you break free from compromise & More.

## **New 6 Speed Torque Converter Automatic Transmission**

- **Optimised Gear shift Quality & Low Fuel Consumption**
- **Durability and Reliability with Compact and Simplified Design**
- **ADAS Compliant Design for Adaptive Cruise Control, Autonomous Emergency Braking & Dynamic Braking System**



# Uncage the thrill. Embrace the safety.

The XUV 3XO sets a high benchmark with 35 standard safety features, ensuring a safe cocoon for you and your loved ones. While the responsive handling and powerful engine transform every drive into an exhilarating experience, features like Level 2 Advanced Driver Assistance Systems (ADAS) offer a comprehensive package promising paramount safety.

- 360 Degree Surround View System
- Electronic Stability Control (ESC)
- Front and Rear Parking Sensors
- Tyre Pressure Monitoring System
- All 4 Disk Brakes (Standard from Base)



Blind Spot Monitor

Bezel-Less Auto Dimming IRVM

**FIRST** IN  
SEGMENT

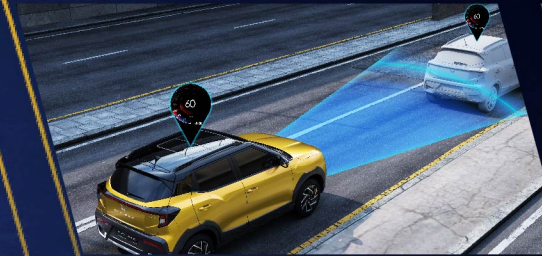
Electronic Power  
Brake & Autohold



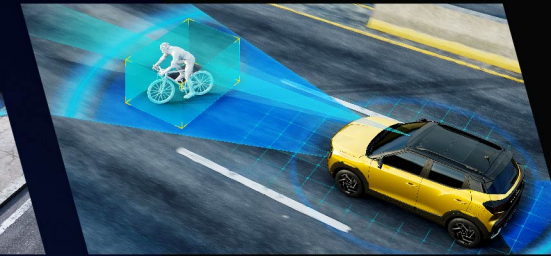


## Drive with confidence, Not just instinct.

The first-in-segment Level 2 Advanced Driver Assistance Systems make the XUV 3XO an impenetrable fortress. With a radar and a camera that detects obstacles, avoids collisions, and assists the driver, there's no place as safe and exciting on the road as this.



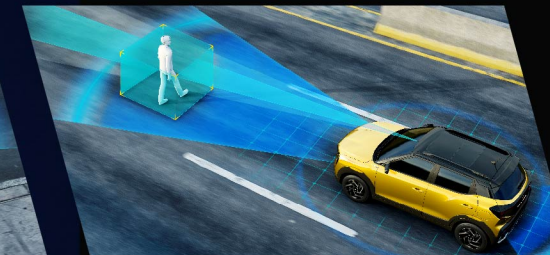
Adaptive Cruise Control



Auto Emergency Braking (Cyclist)



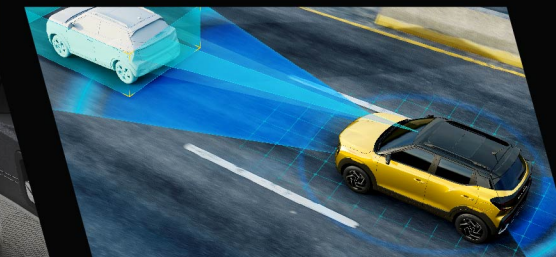
Forward Collision Warning



Auto Emergency Braking (Pedestrian)



Traffic Sign Recognition



Auto Emergency Braking (Vehicles)

- High Beam Assist
- Lane Departure Warning
- Lane Keep Assist
- Smart Pilot Assist



The XUV 3X0 isn't built for compromises. It's the ultimate blend of cutting-edge technology and uncompromising strength. The SUV for those who demand the best of both worlds. From a high-definition touchscreen to voice-activated control, it puts the future of automotive technology at your fingertips. Beneath the surface lies a rock-solid foundation crafted with high-strength materials and meticulous engineering, ensuring exceptional durability for everyday adventures.

Tech-Driven brilliance.  
Engineered to impress.



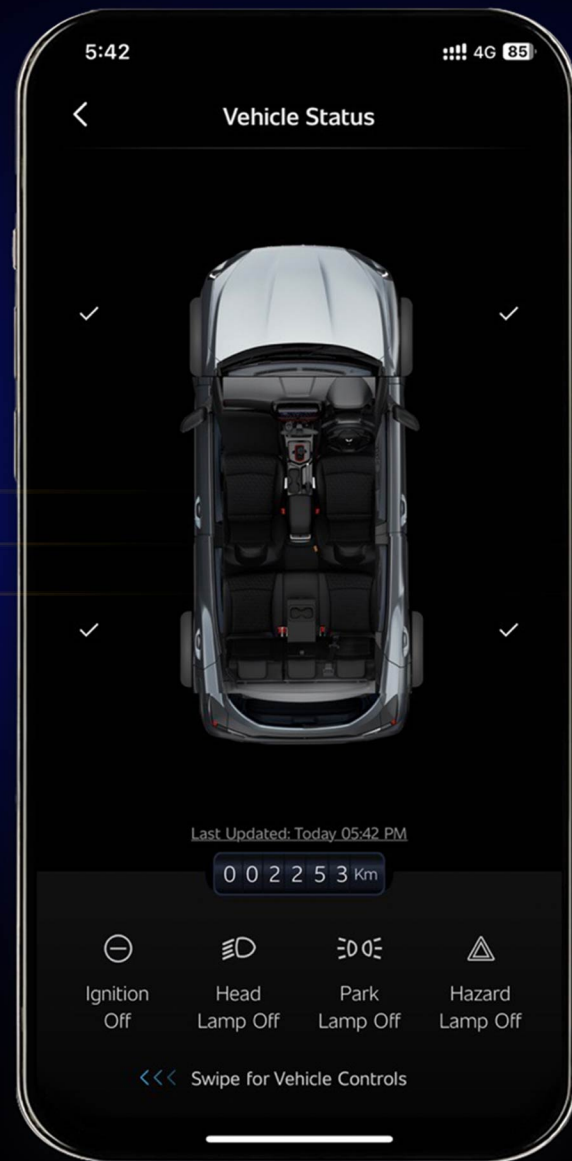
Navigation on Cluster

Wireless Charger & 65 W USB - C Fast Charging

- Twin HD (26.03 cm) Infotainment & (26.03 cm) Full Digital Cluster
- Built-in Amazon Alexa\*
- Wireless Android Auto™ & Apple CarPlay™

Disclaimer: Creative visualisation. For illustrative purpose only.  
\*Certificate Expected

# Intelligent technology at your fingertips



**ADRENOX**  
CONNECT

Intelligent technology is at your fingertips with Adrenox Connect. Track your vehicle in real-time, lock and unlock it remotely, and even turn on the AC of your XUV 3XO. Now, control 80+ impressive Connected Features all with just a few taps on your phone screen. How's that for excitement

- Overspeed Alert • Tyre Pressure Alert
  - High Engine Temperature Alert
  - Engine Idle Alert • Low Fuel Alert
  - Seatbelt Alert • Insurance Expiry
- Lamp Status Alert • Vehicle Start/Stop Alert
  - Door Open Alert • Geo-Fence Alert
- Route Deviation Alert • Time Fence Alert
  - Unauthorised Vehicle Entry Alert
- PUC Expiry • Personalised Safety Alert
- PKE/RKE Low Battery Alert • Urea Level Low alert
  - DPF Choke Alert

- E-Call • SOS Button
- Roadside Assistance

- Live Tracking • Save Route / Save Places
  - Find my SUV • Share SUV Location
  - Push to SUV • Restroom Suggestion
- Ecosense • Trip History • Gamification
- Trip Replay • Pit Stops • Trip Tagging

- In Car Voice Assistant • In-home Alexa\*
- Voice Custom Skill • Smart Wearables

## READ VEHICLE STATUS

- Check Door Status • Check Tyre Pressure
- Check Lamp Status • Check ODO
- My SUV Info • Seat Belt Status
- Check Distance to Empty
- Check AC Status

## ALERTS

## REMOTE FUNCTIONS

- Remote Start and Stop
- Remote Climate Control
- Locate my SUV
- Remote Door Lock/Unlock
- Remote Lamp On/Off
- Remote Skyroof™ Control

## SAFETY

## THIRD PARTY APPS

- Ticker Tape • JustDial • India Today
- Weather Update • Travel Explorer
- Horoscope

## LOCATION BASED SERVICES

## OTHERS

- E-Manual • Valet Mode
- Log Book – Fuel (Fuel Diary)
- mGreetings • Do-Not Disturb
- Journey Planner • FOTA
- My Documents • Profile Manager
- To-do List • Calendar
- Service Booking
- Personalised Greetings
- Toll Diary • M-Lens • Pick up Reminder
- Secondary user access • Create enquiry
- Driver on-call • Service List Manager
- Service Calendar & Reminder
- Manufacturer Update • Social connect
- Mahindra Download Manager

## SMART FEATURES

# XUV 3XO Service Promise

XUV 3XO scores big when it comes to your peace of mind. Offering you a 3-year standard warranty and 3 years of free roadside assistance in the event of small annoyances like running out of fuel or losing a key. Making any drive in your XUV 3XO, not just a thrilling experience, but also a reassuring one.

**3 YEARS**  
UNLIMITED km  
WARRANTY



**ADD-ON EXTENDED  
WARRANTY AVAILABLE**



**3 YEARS OF  
FREE ROADSIDE ASSISTANCE**



**24x7 FREE TOWING**



**FREE FUEL ASSISTANCE\***



**FLAT TYRE ASSISTANCE**



**FREE TAXI IN CASE OF  
BREAKDOWN\***



**KEY ASSISTANCE IN CASE OF  
KEY LOSS OR BREAKAGE**

**mahindra**  
**24X7 ON ROAD  
ASSISTANCE**

**TOLL FREE 1800 571 0848**



**\*Terms & Conditions Apply**

**MX1**

Bi-Halogen Projector Headlamps  
 LED Signature lamp with front turn Indicator  
 LED Indicator on ORVM  
 LED Tail Lamp  
 6 Airbags  
 Electronic Stability Control (ESC)  
 ISOFIX  
 R16 Steel Wheels  
 Electrically Adjustable ORVM  
 Engine Start/Stop  
 Smart Steering Modes  
 Power Window - Front & Rear  
 Power Window : 1- Touch Down (Driver)  
 Front Armrest with Storage  
 60:40 Split Rear Seat  
 Rear AC Vents  
 Front USB - A & Rear USB - C  
 12V Socket  
 Adjustable Headrest for 2nd Row  
 Electronic Trumpet Horn  
 Reverse Parking Sensors  
 Seat Belt Reminder for all Passengers  
 Front Height Adjustable Seat Belt  
 3 - Points Seat Belt for all Passengers

**MX2**

ADDS TO THE FEATURES OFFERED ON MX1

26.03 cm Infotainment  
 4 Speakers  
 Steering Audio Control  
 Remote Keyless Entry  
 Follow Me Home Headlamp

**MX2 PRO**

ADDS TO THE FEATURES OFFERED ON MX2

Single Pane Sunroof  
 Wheel Cover

**MX3**

ADDS TO THE FEATURES OFFERED ON MX2

Single Pane Sunroof  
 26.03 cm HD Infotainment  
 Wireless Android Auto™ & Wired Apple CarPlay™  
 Cruise Control  
 Wireless Charger  
 Wheel Cover

**MX3 PRO**

ADDS TO THE FEATURES OFFERED ON MX3

Bi-LED Projector Headlamps  
 LED DRL with Front Turn Indicator  
 Infinity LED Tail Lamp  
 Stylized Vector Wheel

**AX5**

ADDS TO THE FEATURES OFFERED ON MX3 PRO

Twin HD 26.03 cm Infotainment & 26.03 cm Digital Cluster Screen  
 Adrenox Connect with Built-in Alexa\*  
 Online Navigation  
 Wireless Android Auto & Apple CarPlay™  
 R16 Diamond Cut Alloys  
 Dual Zone Climate Control  
 Rear View Camera  
 Passive Keyless Entry  
 Push Button Start  
 Leather Steering & Gear Knob  
 Tyre Pressure Monitoring System  
 Electrically Foldable ORVM  
 Height Adjustable Driver Seat  
 Rear Armrest with Cup Holder  
 Auto Headlamps + Auto Wiper  
 Rear Wiper & Wash  
 Roof Rails & Rear Spoiler  
 Rear Defogger  
 6 Speakers  
 Adjustable Headrest for 2nd Row Middle Passenger  
 Power Window : - 1 Touch Up (Driver)

**AX5 LUXURY**

ADDS TO THE FEATURES OFFERED ON AX5

Level 2 ADAS  
 360-degree Surround View System with Blind View Monitor  
 Auto Dimming IRVM  
 Electronic Parking Brake with Auto Hold  
 Cooled Glove box

**AX7**

ADDS TO THE FEATURES OFFERED ON AX5

Skyroof™  
 Harman Kardon Premium Audio with Amplifier & Sub-woofer  
 Soft Touch Leatherette on Dashboard & Door Trims  
 Leatherette Seats  
 R17 Diamond Cut Alloys  
 Auto Dimming IRVM  
 LED Front Fog Lamps  
 Front Parking Assist System  
 Cooled Glove Box with Illumination  
 65 W USB - C Fast Charging

**AX7 LUXURY**

ADDS TO THE FEATURES OFFERED ON AX7

Level 2 ADAS  
 360-Degree Surround View System with Blind View Monitor  
 Electronic Parking Brake with Auto Hold

## TECHNICAL SPECIFICATIONS

### ENGINE & TRANSMISSION

	PETROL		DIESEL
Engine Type	mStallion Turbo Charged Multipoint Fuel Injection (TCMPFI) engine	mStallion Turbo Charged Intercooled Gasoline Direct injection (TGDI) engine	Turbo Diesel with CRDe
Capacity	1.2 L	1.2 L	1.5 L
Max. Power	82 kW @ 5000 r/min	96 kW @ 5000 r/min	85.8 kW @ 3750 r/min
Max. Torque	200 Nm @ 1500-3500 r/min	230 Nm @ 1500-3750 r/min	300 Nm @ 1500-2500 r/min
Transmission Type	6 MT / 6 AT		6 MT / 6 AutoSHIFT+

### BRAKES

Front Brakes Disc/Rear Brakes Disc

### SUSPENSION, TYRES & TURNING RADIUS

Front Suspension : McPherson Strut with Anti-roll Bar

Rear Suspension : Twist Beam Suspension with Coil Spring

Turning Radius (m) : 5.3

Tyre : 205/65 R16 Steel | 205/65 R16 Alloy | 215/55 R17 Alloy | Spare Tyre 135/90 R16

### DIMENSIONS

Length x Width x Height (mm)	3990 x 1821 x 1647
Wheelbase (mm)	2600
Fuel Tank (L)	42
Boot space (L)	364**

VARIANT	DIESEL		PETROL			
	MT	AutoSHIFT+	MT		AT	
	CRDe		TCMPFI	TGDi	TCMPFI	TGDi
<b>MX1</b>			•			
<b>MX2</b>	•					
<b>MX2 Pro</b>	•		•		•	
<b>MX3</b>	•	•	•		•	
<b>MX3 Pro</b>	•		•		•	
<b>AX5</b>	•	•	•		•	
<b>AX5 Luxury</b>				•		•
<b>AX7</b>	•	•		•		•
<b>AX7 Luxury</b>	•			•		•

# The XUV 3XO Palette: Express Yourself in Every Hue.

## Single Tone Colour Options



CITRINE YELLOW



DEEP FOREST



DUNE BEIGE



EVEREST WHITE



GALAXY GREY



NEBULA BLUE



STEALTH BLACK



TANGO RED

## Dual Tone Colour Options



CITRINE YELLOW\*



DEEP FOREST#



DUNE BEIGE\*



EVEREST WHITE\*



GALAXY GREY\*



NEBULA BLUE#



STEALTH BLACK#



TANGO RED\*

\* Roof colour in Stealth Black


# Roof colour in Galvano Grey

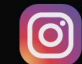
# XUV 3XO

Disclaimers: All features mentioned in this booklet are not available on all the variants of Mahindra XUV 3XO ("Vehicle"). Accessories shown on the Vehicle are not part of the standard configuration and needs to be purchased separately. Performance figures shown are based on internal tests done by the experts in controlled environment. Actual performance figures may vary due to various factors such as driving conditions, maintenance, etc. and may differ in conditions. The images of the Vehicle shown are creative visualization and for illustrative purpose only. Tinted glass on the Vehicle is due to lighting effect. The colour of the Vehicle depicted in the image may differ from its actual appearance. Kindly visit your nearest Mahindra dealership to check the actual appearance of the Vehicle. Sunroof of the Vehicle is the largest sunroof in terms of dimensions in UVC segment and this feature is available only in select variants of the Vehicle. AdrenoX Application is available in select variants of the Vehicle. Harman Kardon audio system is available in select variants of the Vehicle. Harman Kardon and all related marks are registered trademarks of Harman and or its affiliates. Alexa feature is introduced to assist the Driver and improve the safety and convenience of driving a Vehicle. Alexa is only available in certain languages and regions. Alexa functionality may vary by location and variant of the Vehicle. Amazon, Alexa, and all related logos are trademarks of Amazon.com, Inc. or its affiliates. In view of our policy of continuously improving our products, we reserve the right to alter specifications or designs without prior notice and without liability to you. We reserve the right to add or delete any feature without prior notice and without any liability. Drive Modes are available only in Petrol Automatic variants. 'Android Auto' is a trademark of Google LLC and its affiliates. To use Android Auto on the Vehicle display, you will need an Android phone running Android 6.0 version or higher, an active data plan, and the Android Auto app. Apple Carplay is compatible only with select mobile devices with iOS operating system. The software and security mechanisms in the Vehicle are subject to ongoing developments. Like with computers or the operating systems of mobile devices, the software and security mechanisms in the Vehicle may also be updated at irregular intervals. MicroHybrid is available in all the variants. Smart Pilot Assist and Adaptive Cruise Control is only available on Luxury pack (L) Petrol Automatic variants of the Vehicle. Advanced Driver Assistance System (ADAS) are meant to assist the driver to keep the passengers and pedestrians safe on the roads. ADAS is not a substitute for human eye and driver's vigilance. The driver shall remain fully responsible for safety, vigilant and attentive driving. Only the Luxury pack variants (L) come with Electronic Park Brake. AX7 and above variants come only with dual tone colour options. The spare tyre does not come with an alloy.

[auto.mahindra.com/suv/xuv3XO/](https://auto.mahindra.com/suv/xuv3XO/)

 [Mahindra XUV3XO](#)

 [@mahindraxuv3XO](#)

 [@mahindraxuv3XO](#)

 [@MahindraXUV3XO](#)

 **3 YEARS**  
UNLIMITED km  
WARRANTY